

fat arts



Lifelines

A unique & personal snapshot of a life lived

A Lifeline is a chronological caricature of a person's life or people's lives. You may have chosen a Lifeline to commemorate an anniversary of 2 people's life together or a significant birthday, whatever the occasion. I turn the information you give me into a visual timeline for you, your family and friends to enjoy and reminisce by.

The information you give me will lay the foundations of your Lifeline. The more consideration you put into it, and how to convey that to me will mean a more personalised Lifeline, something uniquely special.



COMMISSIONING A LIFELINE / TIMING

To commission a Lifeline please feel free to contact us to discuss any queries you may have. Or you can just start gathering the information (see "Content"). Send it through to me (via post or email) as well as the exact or approximate date you'd like your Lifeline completed by. As soon as I get that date I will schedule in your artwork. Turn around time will vary, but I always try to juggle my schedule to try so that everyone receives the artwork on time.



CONTENT - MOMENTS / OBJECTS (M/O's)

The content of the Lifeline is entirely up to you. It is made up of moments and objects, which are also how I price your Lifeline. Moments might include significant events, occasions, milestones, hobbies, phases, passions, good times, bad times, holidays and jobs. Objects might include homes, property, pets and vehicles. Combined, they tell the story.

An event may be pinpointed to a specific date, while a phase or hobby may last for years. If you need help, just ask and I can make suggestions. the date or hobby does not need to be exact, but it helps put the M/Os in order. a brief one or two word description, such as pet, holiday or first car. the text that will actually be written on the Lifeline, if you choose to include any extra information that helps me understand the significance of the M/O.



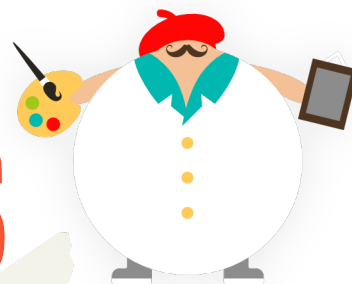
INFORMATION NEEDED FOR EACH M/O

- DATE:** the date or period of time doesn't need to be exact but it allows me to put the M/Os in order.
- MOMENT/OBJECT (M/O):** a brief one or two word description (ie. pet or holiday).
- WORDING:** this is the text and information that will actually be written on the Lifeline (if you choose to include any). It may include dates, names or whatever information you'd like written. Some M/O's you may choose not to have any text at all (on our Lifeline I chose not to write anything for a specifically sad period but just represented it with a broken heart).
- DESCRIPTION:** if necessary give me more information about the M/O to help me understand it.

fat arts

Lifelines

information & pricing



IMAGES

You might provide a sketch or describe what you'd like to see. Write down any links to websites that may be relevant. Submit any images or photos. What you tell or give me here is going to have the most important bearing on your visual Lifeline. If you haven't got any ideas or preferences then leave it up to me.



SUBMITTING YOUR CONTENT

Your content can be submitted digitally, on paper, or a combination of both. Images can be prints, photos, digital files or website links. Please name or label everything clearly so that I know which M/O they belong to. Once I receive your information I will go over it, discuss anything I need to with you and make any suggestions. I will give you a quote and a sketched storyboard of your Lifeline for your approval before I begin the final artwork.



SIZE / COLOURS

The length is determined by the number of M/Os. If it becomes longer than 2.4m I recommend separating it into 2 pieces of art. If you have specific requests regarding size let me know. Also tell me if you have specific colours themes you prefer



FRAMING

All Lifelines frames are 300mm high x the variable length. The framing comes in one that makes it convenient to access the Lifeline if alterations or additions need to be made. The artwork is mounted on blonde timber ply with a pine timber frame running along the top and bottom lengths. For safety reasons, the artwork is covered in perspex, not glass. There are multiple hanging mounts on the back of the frame.. The framing timbers are raw and uncoated; if you'd like yours painted, stained or finished in any way just ask and we will provide you with an additional quote.



COLLECTION

All Lifelines can be collected from our studio in Bridgetown, WA. Unframed Lifelines can be posted Australia-wide for \$15. We can quote on international postage.

Pricing

The total cost is based on 2 components - the Storyboard and the number of M/Os.

STORYBOARD

The cost to get the Lifeline to completed Storyboard stage includes discussions, planning, design and then approved storyboard. Its cost is based on the number of M/Os.

15–20 M/O storyboard costs	\$200
20–25 M/O storyboard costs	\$250
25–30 M/O storyboard costs	\$300

Final artwork – There is a minimum of 15 M/Os required to commission a Lifeline. Some M/Os you request may require a significant more amount of detail and time.

FINAL ARTWORK

Each M/O costs \$25
Each complex M/O costs \$40

FRAMING (Optional)

Framing is optional and the cost depends on the final length of your Lifeline. This is determined when I complete the Storyboard.

The cost for framing Lifelines is:

Up to 1.2m	\$160
1.2m – 1.8m	\$200
1.8m – 2.4m	\$240



PAYMENT

Unless otherwise arranged, we require payment upon collection or delivery. The following methods are accepted: cash, direct deposit (EFT), PayPal, Credit Card and cash.

Our EFT details are:
FAT ARTS, bsb 736121, acct 517980.

